

MONTHLY MEMBERSHIP PROGRESS REPORT

LOCATION ENGLAND

District 105CN

Results as of: 2/28/2023

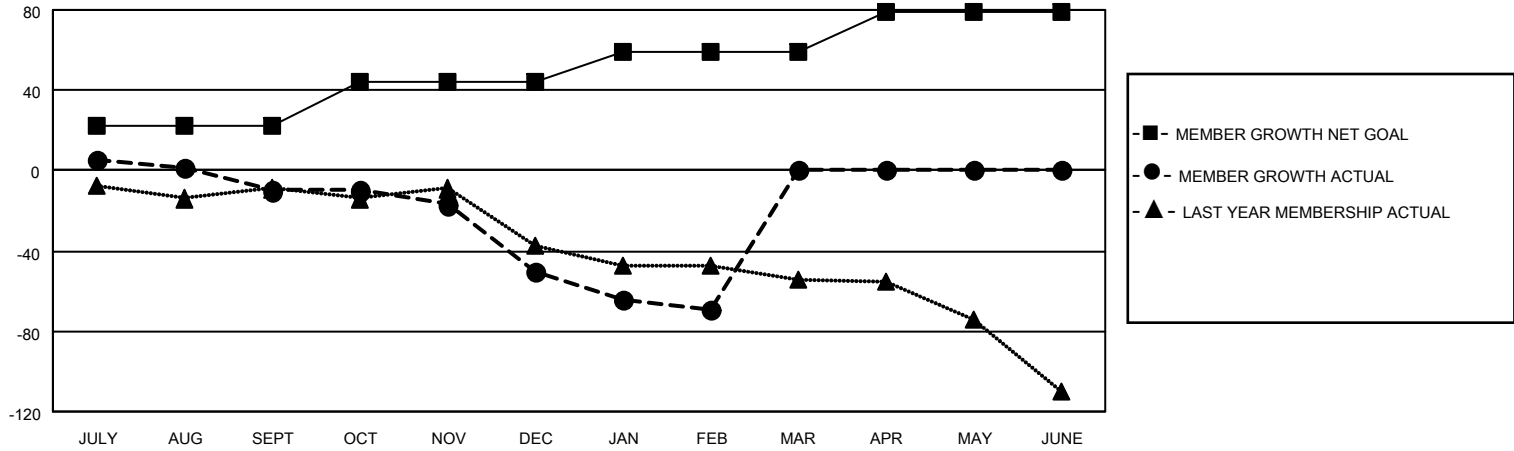
Clubs			
RESULTS FOR 2022-2023			
QUARTER	NEW CLUB GOAL	NEW CLUBS	DROPPED CLUBS
JULY/AUG/SEPT	0	0	1
OCT/NOV/DEC	0	0	1
JAN/FEB/MAR	0	0	4
APR/MAY/JUNE	1	0	0

Members			
RESULTS FOR 2022-2023			
QUARTER	MEMBER GROWTH NET GOAL	MEMBER GROWTH ACTUAL	DROPPED MEMBERS ACTUAL (including transfers)
JULY/AUG/SEPT	22	28	31
OCT/NOV/DEC	22	28	62
JAN/FEB/MAR	15	16	29
APR/MAY/JUNE	20	0	0

GOALS AND ACTUAL NEW CLUBS CUMULATIVE



GOALS AND ACTUAL MEMBERS CUMULATIVE



DROPPED CLUBS: 6	
<u>DROPPED MEMBERS</u>	
DECEASED	14
CLUB CANCELLED	0
OTHER	108
TOTAL	122

30 CLUBS OF 89 ADDED 1 OR MORE NEW MEMBERS

[CLICK HERE FOR CUMULATIVE MEMBERSHIP DATA](#)

<u>GENDER DISTRIBUTION</u>	
MALE	783 (67.10%)
FEMALE	384 (32.90%)
NON BINARY	0 (0.00%)
PREFER NOT TO ANSWER	0 (0.00%)
TOTAL FAMILY UNIT MEMBERS	
	212
FAMILY MEMBERS PAYING HALF DUES	
	109